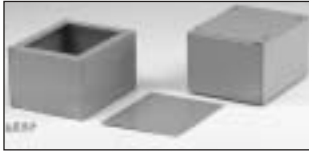
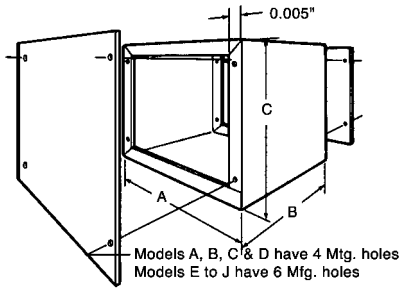


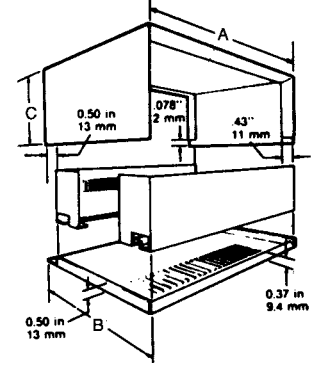
1415 Series Steel Utility Enclosures



The 1415 enclosures are painted with an ASA 61 gray baked enamel finish. Top and bottom panels are secured with eight self tapping screws (included).



1426 Series Ventilated Instrument Cases



Mfr's Type	Dimensions (In.)			Metal Thickness Inches	Gauge	Price 1-5
	A	B	C			
1415A	4	2	4	0.036	20	10.87
1415B	4	3	5	0.036	20	11.05
1415C	6	4	5	0.036	20	14.05
1415D	6	6	6	0.036	20	21.55
1415E	9	5	6	0.036	20	23.32
1415F	10	7	8	0.048	18	35.29
1415G	12	6	7	0.048	18	35.10
1415H	10	8	10	0.048	18	45.44
1415I	12	8	11	0.048	18	51.22
1415J	15	7	9	0.048	18	50.15

The 1426 series case and bottom are 20-gauge steel, finished in off white satin paint. Rear panel and bottom of case is vented. Front panel is satin black and rear panel matches case color; both are 0.064" thick aluminum for easy machining. Each unit comes complete with hardware and rubber feet.

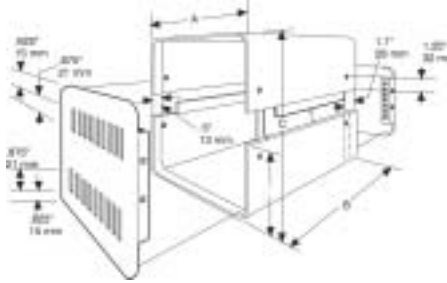
Mfr's Type	Dimensions (In.)			Price*
	A	B	C	
1426K	6	5	4	34.36
1426M	8	6	4	35.80
1426O	10	7	4	40.08
1426Q	11	11.7	5.5	40.09
1426S	12	6	4	42.95
1426V	12	8	4	42.95
1426W	12	10	4	45.82
1426Y	12	6	5.5	42.95

* Call for quantity discounts.

1401 Series Steel Ventilated Instrument Cases



The 1401 series case top and bottom halves are 20-gauge steel, finished in contempra grey paint. The front panel is satin black and the rear vented panel is contempra grey. Both panels are 0.064" thick aluminum for easy machining. Each unit includes hardware and rubber feet.



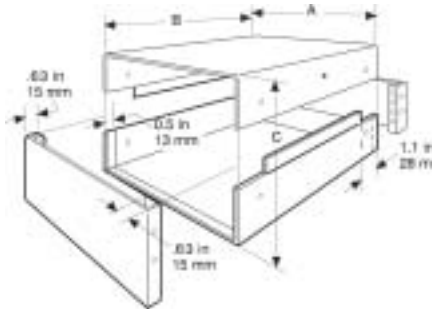
Mfr's Type	Dimensions (In.)			Price*
	A	B	C	
1401AAA	4	6	4	39.09
1401AA	6	6	5	42.10
1401A	6	10	5	45.11
1401C	8	10	9	52.62
1401E	8	8	8	49.61
1401G	10	12	9	66.15
1401K	10	14	6.5	67.65
1401M	12	8	9	70.66
1401N	14	8	9	72.16
1401P	14	10	5	64.65

* Call for quantity discounts.

1458 Series Metal Instrument Cases



The 1458 series case is split into two equal halves, constructed of 20-gauge steel, finished in satin black. The front and back panels are 0.064" thick aluminum (one satin black and the other contempra grey) for easy machining. Symmetrical design, either end can be front or rear. Each unit includes hardware and rubber feet.



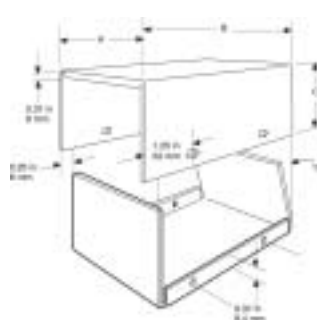
Mfr's Type	Dimensions (In.)			Price*
	A	B	C	
1458A3	4	4	3	28.64
1458B4	6	4	4	31.75
1458C3	6	6	3	28.64
1458C4	6	6	4	29.59
1458D3	8	8	3	34.61
1458D4	8	8	4	36.52
1458D5	8	8	5	39.38
1458E3	8	10	3	37.47
1458E4	8	10	4	39.61
1458E5	8	10	5	41.77
1458G3	10	8	3	39.61
1458G4	10	8	4	42.95
1458G5	10	8	5	40.57

* Call for quantity discounts.

1454 Series Slope or Vertical Front Instrument Cases



The 1454 series is a 20-gauge steel instrument case with choice of sloping or vertical front panels by reversing the case. The panels are contempra gray with offsetting textured black covers. Each unit includes 6-32 nickel-plated screws and self adhesive rubber feet.



Mfr's Type	Dimensions (In.)			Price*
	A	B	C	
1454C	4	2.5	2	10.53
1454E	4	5	2	12.03
1454F	4	6	3	13.53
1454G	6	2.5	2	13.53
1454H	5	7.5	2.5	13.53
1454J	4	3	4	13.53
1454K	8	3.5	2.5	15.04
1454L	5	6	4	13.53
1454M	4	3	6	15.04
1454P	10	5	3.5	18.04
1454R	5	5	7.5	15.04

* Call for quantity discounts.